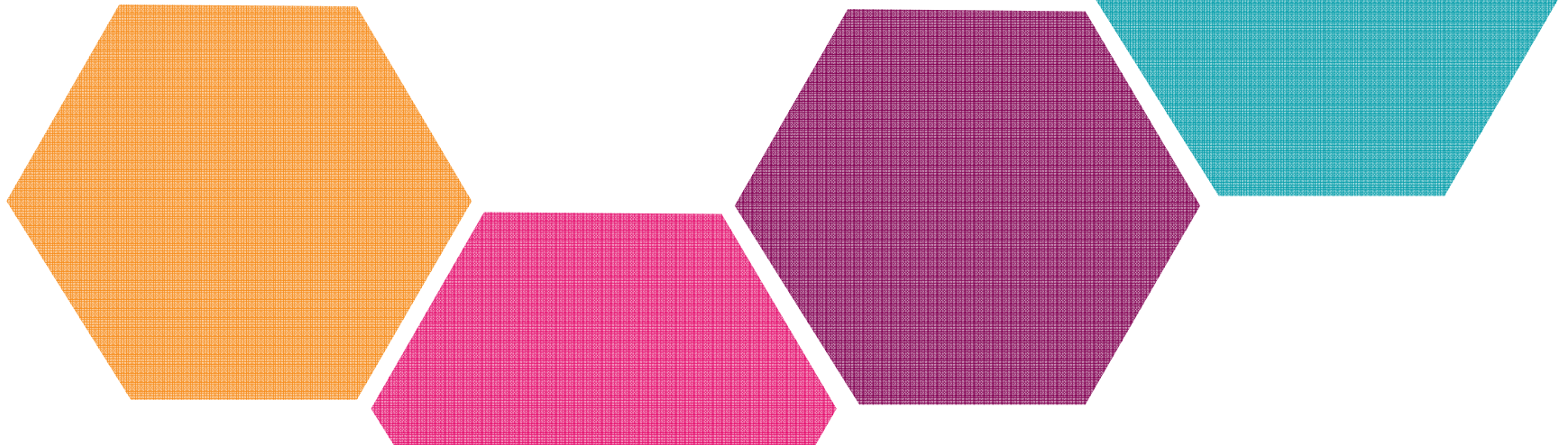


# Care and Health Improvement Programme

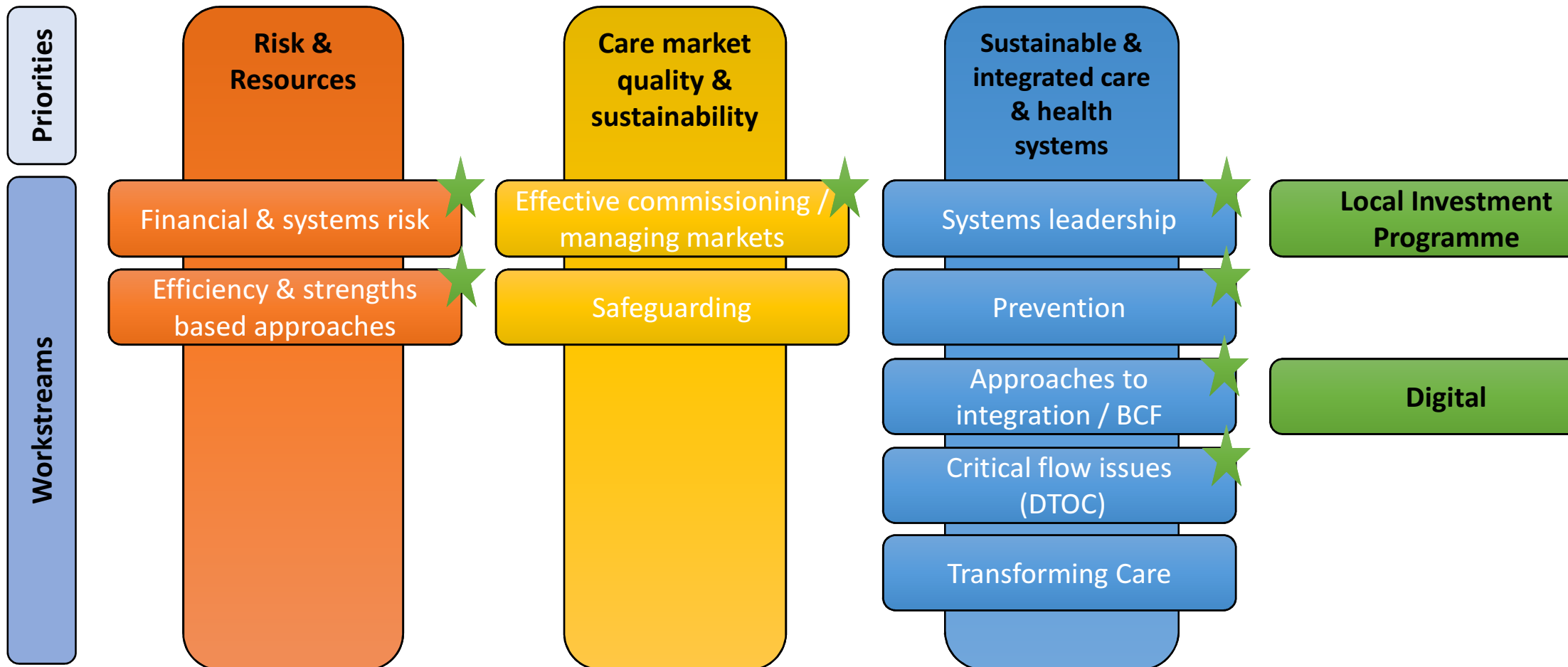
2018/19 Programme

Andrew Hughes  
Head of Care & Health Improvement Programme



# Sector-Led Improvement for Care and Health

Care and Health Improvement Programme Framework 2018/19



# Risk and resources

## Key deliverables:

- High level bespoke support to the most financially challenged
- Promote Use of Resources Peer Challenge
- Update the risk awareness tool
- Regionally based efficiency and asset based learning and support networks
- Targeted support by efficiency experts

# Care markets and sustainability

## Key deliverables:

- Understanding local care markets and predicting future demand
- Market failure contingency planning
- Improving Market Position Statements and conversations with providers
- Commissioning home care
- Promoting Commissioning for Better Outcomes and Making Safeguarding Personal

# Sustainable and integrated care & health

## Key deliverables:

- HWB induction sessions, Leadership Essentials, annual summit and tailored support
- Health in All Policies peer support
- Prevention at Scale test sites and Master Classes
- Develop evidence base for good models of sustainable services
- Facilitated integration workshops; inc. finance modules and pilot models of care models
- Changing the service model; Support design of effective integrated systems
- Better co-ordinate NHS commissioning of social care
- Transforming Care; identify and resolve funding issues, housing strategies; Toolkit to deliver improvements to quality and market shaping